



TECHNICAL RIDER KOMEDIE

version december 2013

CONTENTS

Pg 2	Contact
Pg 2	Characteristics of the venue
Pg 2	Playing Area Characteristics
Pg 4	Technical Equipment
Pg 7	Plans

1. CONTACT

Wim Bagein

Tel: +32 (0)51/265.700

Fax: +32 (0)51/265.801

Mob: +32 (0)478/511.767

wim.bagein@despil.be

2. CHARACTERISTICS OF THE VENUE

2.1 SEATS

Extending Stand: 202 seats, divided on 12 rows

Balconies: On both sides of the control room there small balconies with 3 seats each

2.2 DRESSING ROOMS

There are 2 dressing rooms each of them with a capacity of 6 persons

Both dressing rooms are equipped with a sink, cold and hot water, a shower, a toilet and a lighted mirror

2.3 ACOUSTICS

4 curved MDF structures per side, with flat walls in between them.

In front of the walls there are black curtains, variable in height, to be able to influence the acoustic characteristics of the venue.

2.4 LOAD-IN & LOAD-OUT

There is a direct acces from the parking space to the playing area through a double door. There is a doorstep of 17cm high, the dimensions of the door are 2,45m wide and 3,10m high.

3. PLAYING AREA CHARACTERISTICS

There is no raised stage in the Komodie.

3.1 DIMENSIONS

The width of the playing area is 11,90 meters.

The depth is variable, because there is a possibility of not using the complete extending stand, but of course, the audience capacity decreases as the playing area depth increases. Below you can find the relation between playing area depth and audience capacity in a spreadsheet

Depth playing area	Audience capacity	Number of retracted rows
4,95m	202	0
5,40m	187	1
6,75m	168	2
7,60m	151	3
8,55m	134	4
9,40m	119	5
10,20m	102	6
11,00m	85	7
11,80m	68	8
12,60m	51	9
13,40m	34	10
14,20m	17	11
15,00m	0	12

3.2 FLY BARS

There are 3 fly bars in the Komodie

11 meters long

50mm diameter, double tube

1 manually operated fly bar (winch)

2 motorised fly bars (fixed speed)

Maximum loading capacity: 250kg divided

Maximum point load: 50kg

Height between fly bars and stage floor is 8,30 meters except for the upstage fly bar : 7,50 meters

ATTENTION!! There is no fly tower, so these fly bars are not suitable to perform any changes with

LIST OF FLY BARS

Number	Motorised	Distance to backdrop (m)	Length (cm)	Maximum load divided (kg)	Maximum point load (kg) underneath hoist cable
1	✓	6,90	1100	250	50
2		3,10	1100	250	50
3	✓	0,80	1100	250	50

3.3 FLY GALLERIES

4 Fly galleries cover the entire width of the venue. These galleries can be equipped with luminaires on both sides (back and front)

These 4 fly galleries are connected to each other by 2 fly galleries that cover the entire depth of the venue

The distance between the fly galleries and the floor is 8,70 meters.

3.4 ELECTRICAL SUPPLY

Electrical supplies for sound and lighting are separated

There is one unit stage left 400V – 3L + N + G with following connections:

1 x CEE 125A – 6h (red)

1 x CEE 63A – 6h (red)

1 x CEE 32A – 6h (red)

2 x CEE 16A – 6h (red)

There is one connection stage right 400V – 3L + N + G CEE32A – 6h (red) **SOUND**

There are also several additional power plugs in the venue 240V 16A (shuko)

4. TECHNICAL EQUIPMENT

4.1 GENERAL

4.1.1 curtains and screens

1 backdrop	16m x 8,8m (w x h) night blue mounted on a fixed rail, motorised, cannot be used elsewhere
1 backdrop	12m x 8,21m (w x h) white
4 legs	1,8m x 8,21m (w x h) night blue
2 legs	3m x 8,21m (w x h) night blue
1 border	12m x 3m (w x h) night blue
1 projection screen	6,4m x 3,6m (w x h) white mounted on 2 chain hoists between the backdrop and the first fly gallery this screen cannot be used elsewhere and cannot be operated during a performance

4.1.2 marley

Kleur :	black or white/grey
Dikte :	1,2mm
Breedte :	1,6m
Lengte:	4 lanes of 11,0m (black/white) 4 lanes of 11,0m (black/grey)

4.1.3 communication

We have a stage monitoring system with speakers in both dressing rooms and in the control room

4.2 LIGHTING

4.2.1 dimmers

137 digital dimmers : ADB Eurodim2	112 x 2,5kW 9 x 5kW 16 x non-dim
------------------------------------	--

4.2.2 luminaires

23	P.C. luminaires (ADB C 103)
6	Profile luminaires (ADB DS 105: 15°-31°)
6	Par 64 luminaires (Thomas)

4.2.3 lighting desks

1 ADB Mentor – 24 subs – 1 playback – 360 channels
1 Strand 520i – 24 subs – 2 playbacks – 1024 channels

4.2.4 connections

Harting Han16 : 8 x 2,5kW

Cee 16A-6h (blue) for the 2,5kW channels

Cee 32A-6h (blue) for the 5kW channels

ATTENTION!! The Harting Multi connectors are cabled this way:

- 1 + 2 = circuit 1
- 3 + 4 = circuit 2
- 5 + 6 = circuit 3
- 7 + 8 = circuit 4
- 9 + 10 = circuit 5
- 11 + 12 = circuit 6
- 13 + 14 = circuit 7
- 15 + 16 = circuit 8

4.2.5 colour gels

LEE	010 - medium yellow
Rosco	027 - medium red
Rosco	071 - tokyo blue
LEE	090 - dark yellow green
LEE	101 - yellow
LEE	102 - light amber
LEE	103 - straw
LEE	104 - deep amber
LEE	105 - orange
LEE	106 - primary red
LEE	107 - light rose
LEE	109 - light salmon
LEE	110 - middle rose
LEE	111 - dark pink
LEE	113 - magenta
LEE	115 - peacock blue
LEE	116 - medium blue-green
LEE	117 - steel blue
LEE	118 - light blue
LEE	119 - dark blue
R. supergel	119 - light hamburg frost
LEE	120 - deep blue
LEE	122 - fern green
LEE	124 - dark green

LEE	126 - mauve
Rosco	127 - smokey pink
LEE	128 - bright pink
LEE	132 - medium blue
LEE	134 - golden amber
LEE	135 - deep golden amber
LEE	136 - pale lavender
LEE	137 - special lavender
LEE	138 - pale green
LEE	139 - primary green
LEE	140 - summer blue
LEE	141 - bright blue
LEE	142 - pale violet
LEE	143 - pale navy blue
LEE	147 - apricot
LEE	151 - gold tint
LEE	152 - pale gold
LEE	153 - pale salmon
LEE	156 - chocolate
LEE	157 - pink
LEE	158 - deep orange
LEE	161 - slate blue
LEE	164 - flame red
LEE	166 - pale red

LEE	170 - deep lavender
LEE	174 - dark steel blue
LEE	179 - chrome orange
LEE	180 - dark lavender
LEE	181 - congo blue
LEE	182 - light red
LEE	195 - zenith blue
LEE	196 - true blue
Rosco	197 - Alice blue
LEE	200 - double CT blue
LEE	201 - full CT blue
LEE	202 - 1/2 CT blue
LEE	203 - 1/4 CT blue
LEE	204 - full CT orange
LEE	205 - 1/2 CT orange
LEE	206 - 1/4 CT orange
LEE	219 - lee fluorescent green
LEE	241 - lee fluorescent 5700K
LEE	242 - lee fluorescent 4300K
LEE	243 - lee fluorescent 3600K
LEE	251 - 1/4 white diffusion
LEE	253 - hampshire frost
LEE	254 - new hampshire frost

4.2.6 miscellaneous

1 elevator ALP DHCPI-90

working height : 8,50m

maximum load : 120kg max

Elevator with battery

Several ladders are available

4.3 SOUND

4.3.1 mixing desk

1 Yamaha LS9-16

4.3.2 speakers and amplifiers

4 Meyer Sound UPL-1 (1 x 10" + 1 x 1" selfpowered) 2 per side

2 Meyer Sound USW-1 (2 x 15") 1 per side

1 Crest Audio MA5850 amplifier for subs

1 Meyer Sound B-2EX processor for subs

1 DBX 223 XL Crossover

4.3.3 outboard

1 CD-player: Sony CDP-D500

1 MD-player: Sony MDS-JE 500

4.3.4 connections

Fixed system : 24 in and 8 out

1 stage block on the back wall, stage right

4.4 VIDEO

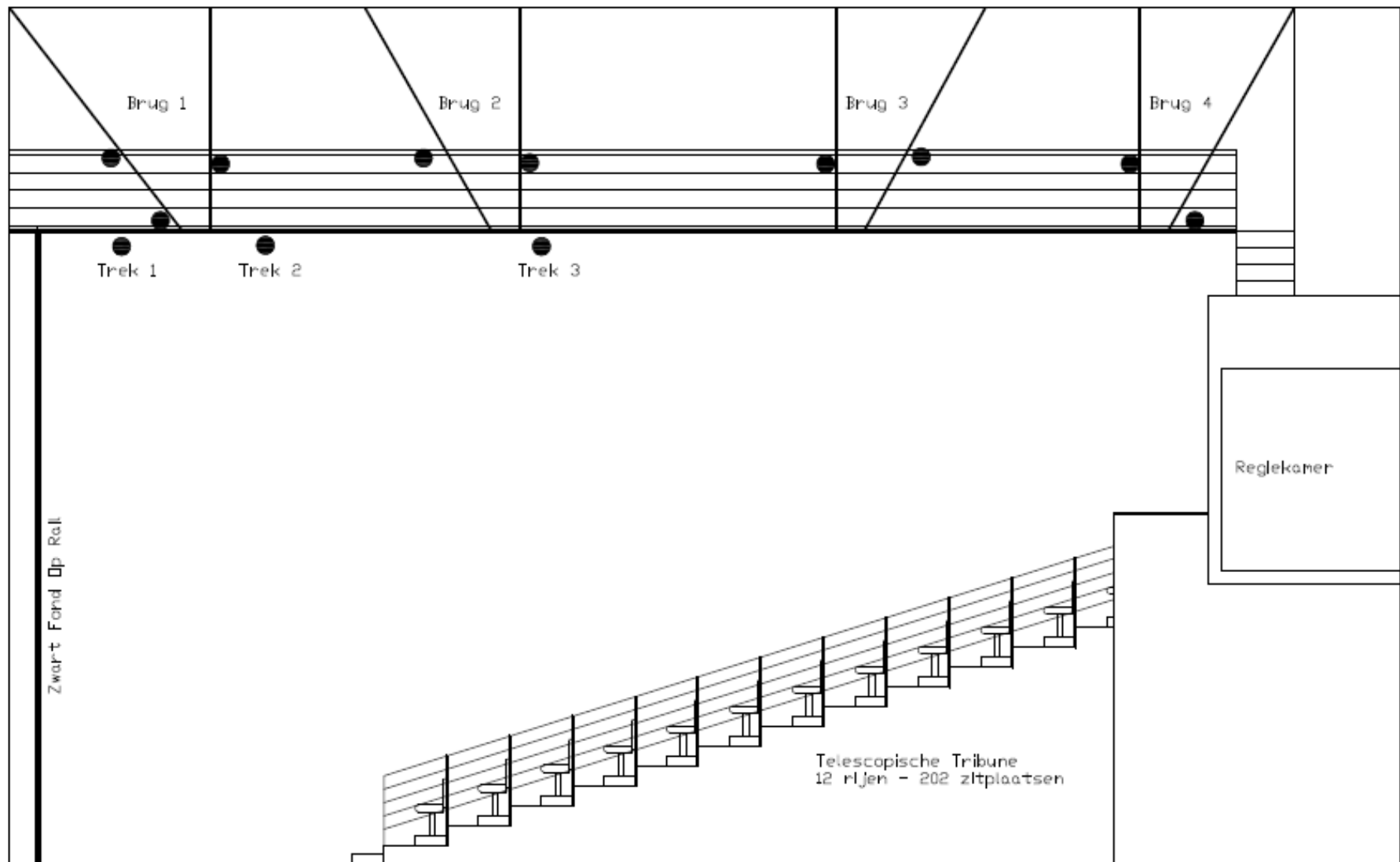
The Komodie has 1 projector : NEC NP-PA500X (LCD projector, 5000 ansi-lumen)

There is a coaxial multicable (5x coax) between the control room and the playing area (stage right)

There are adapters 5x coax to VGA as well as an active adaptor Ethernet to VGA

5. PLANS

5.1 Section



5.2 Plan

