

TECHNICAL RIDER SCHOUWBURG

Update September 2019



Cultuurcentrum De Spil vzw
Hippoliet Spilleboutdreef 1
B-8800 Roeselare
T +32 51 265 700
info@despil.be
www.despil.be

CONTACT

Technical Director Wim Bagein – T +32 51 265 700 – M +32 478 511 767 – wim.bagein@despil.be

GENERAL - AUDIENCE PART

- CAPACITY**

Ground Floor	598 seats, of which 90 mobile seats on the orchestra pit
Balcony	238 seats
Wheelchairs	6 places on row A of the ground floor
- ACCESS**

The main entrance is located at the front of the building.
Access to the venue via 2 doors on the ground floor, 2 doors on the first floor and 2 doors on the second floor

GENERAL – BACKSTAGE

- STAGE ACCESS**

Via the loading dock on the parking of the Schouwburg, which can accommodate 1 Trailer (parking situated on the right hand side of the building)
GPS coordinates : N 50°56'15.418" E 3°7'28.885"
Height of the loading dock is 110cm
1 sectional door of 2,85m wide and 3,20m high
The smallest passage to the stage is 2,79m wide and 3,02m high
Next to the loading dock you can find the artist entrance. Access by a 4-digit code, obtainable on request
- DRESSING ROOMS**

There is a total of 11 dressing rooms, divided over 3 floors.
There is Wi-Fi in the dressing rooms
All dressing rooms are equipped with a sink, cold and hot water, a lighted mirror and stage monitoring
On every floor there are 2 toilets and 2 showers
Depending on availability, there is the possibility to use one or more classrooms as extra dressing room

FIRST FLOOR

Dressing room 1 (3 persons, 12m²) Dressing room 2 (7 persons, 19m²)
Dressing room 3 (3 persons, 10m²)

Green Room

GROUND FLOOR (stage level)

Dressing room 4 (2 persons, 7m²) Dressing room 5 (1 person, 6m²)

Dressing room 6 (3 persons, 10m²) Dressing room 7 (2 persons, 7m²)

Dressing room 8 (3 persons, 9m²)

BASEMENT FLOOR

Dressing room 9 (4 persons, 11m²) Dressing room 10 (7 persons, 18m²)

Dressing room 11 (4 persons, 11m²)

SAFETY AND REGULATIONS

All elements being placed on stage or hung in the fly bars (scenery, curtains, wooden elements, ...) must be flame-retarding.

Every use of smoke, fire, pyrotechnics, confetti, ... must be communicated in advance and discussed if necessary.

Operation of the fly bars is reserved for our own staff, except after explicit permission.

It is absolutely forbidden to lift people with the fly bars.

The safety/fire curtain must at all times be able to come down in free fall. Therefore, it is forbidden to build scenery underneath the safety/fire curtain

The maximum permitted noise level for electronically amplified (music) activities is 95dB (A) LAeq15min. Fines arising from violations will be recovered from the technician who commits the violation.

Smoking is prohibited in the entire building.

STAGE / INFRASTRUCTURE

1. DIMENSIONS

Playable width : 9m to 12m

Playable height : 5,5m to 7m (movable teaser)

Stage : 20m wide (wall to wall)

80cm high

15,2m deep (stage edge to back wall)

Apron : 2,40m deep

2. CHARACTERISTICS

Floating stagefloor

Metal frames 0,5m on 2m in which Keruing wood is laid

Painted black with Rosco stage paint

Bearing power : 500kg/m²

3. FLY TOWER / FLY BARS

Free height between stage floor and fly bars : 17,36m

Height between stage floor and fly loft : 18,35m

Height between stage floor and roof : 20,50m

29 FLY BARS OVER THE STAGE FLOOR

15m long, 50mm diameter, double tube

22 counterweight fly bars

7 motorised fly bars

Maximum load : 300kg divided

Maximum point load : 80kg underneath the hoist cables

4 FLY BARS OVER THE REAR STAGE

12m long, 50mm diameter, double tube

Motorised fly bars, 2 fixed speeds

Maximum load : 200kg divided

Maximum point load : 80kg underneath the hoist cables

2 LATERAL FLY BARS

9m long, 50mm diameter, double tube

Motorised fly bars, 1 fixed speed

Maximum load : 300kg divided

Maximum point load : 80kg underneath the hoist cables

1 APRON FLY BAR

11m long, 50mm diameter, single tube

Motorised fly bar, 1 fixed speed

Maximum load : 300kg divided

Maximum point load : 50kg underneath the hoist cables

Notes

- The grey marked lines in the spreadsheet are empty spaces in the fly bar system. The mounting space is there, but there are no fly bars installed
- Default usage can always be adapted according to the needs of the production

N°	Motor	Default usage	Position	Depth	Length	Max load
-1	✓		Apron	-2,40	11m	300 kg / 50kg
1			Stage	1,15	15m	300 kg / 80kg
2			Stage	1,39	15m	300 kg / 80kg
3						
4		Border	Stage	1,85	15m	300 kg / 80kg
5		Legs	Stage	2,05	15m	300 kg / 80kg
6	✓		Stage	2,31	15m	300 kg / 80kg
7			Stage	2,55	15m	300 kg / 80kg
8		Legs	Stage	3,16	15m	300 kg / 80kg
9	✓		Stage	3,46	15m	300 kg / 80kg
10		Border	Stage	3,65	15m	300 kg / 80kg
11			Stage	3,91	15m	300 kg / 80kg
12	✓		Stage	4,15	15m	300 kg / 80kg
13		Legs	Stage	4,40	15m	300 kg / 80kg
14						
15		Border	Stage	4,88	15m	300 kg / 80kg
16			Stage	5,12	15m	300 kg / 80kg
17	✓		Stage	5,37	15m	300 kg / 80kg
18		Legs	Stage	5,61	15m	300 kg / 80kg
19						

20			Stage	6,14	15m	300 kg / 80kg
21	✓		Stage	6,36	15m	300 kg / 80kg
22			Stage	6,63	15m	300 kg / 80kg
23		Legs	Stage	7,28	15m	300 kg / 80kg
24						
25		Border	Stage	7,74	15m	300 kg / 80kg
26			Stage	7,98	15m	300 kg / 80kg
27	✓		Stage	8,23	15m	300 kg / 80kg
28						
29		Cyclo	Stage	8,73	15m	300 kg / 80kg
30						
31		Legs	Stage	9,20	15m	300 kg / 80kg
32						
33	✓		Stage	9,69	15m	300 kg / 80kg
34			Stage	9,93	15m	300 kg / 80kg
35		Black Backdrop	Stage	10,24	15m	300 kg / 80kg
36		White Backdrop	Stage	10,44	15m	300 kg / 80kg
37	✓		Rear Stage	11,36	12m	200 kg / 80kg
38	✓		Rear Stage	11,75	12m	200 kg / 80kg
39	✓		Rear Stage	12,12	12m	200 kg / 80kg
40	✓		Rear Stage	12,53	12m	200 kg / 80kg
SIDE	✓		Stage Left	***	9m	300 kg / 80kg
SIDE	✓		Stage Right	***	9m	300 kg / 80kg

4. ORCHESTRAPIT

The orchestra pit is made out of 3 parts:

- 1 centre part (2,2m x 4,3m) which is a hydraulic elevator platform (lifting capacity = 2t)
4 levels : stage, ground floor, orchestra pit (= 2,35m lower than stage level), basement
- 2 outer parts, spindle elevator platform (lifting capacity = 0kg)
3 levels : stage, ground floor, orchestra pit (= 2,35m lower than stage level)

14m wide on the widest point and 3,34m deep on the deepest point (5,65m when on orchestra pit level)

5. FLY GALLERIES

2 lateral fly galleries over the stage sides, free height underneath is 7,2m

1 lighting bridge (fixed height!!), connecting to the lateral fly galleries, free height underneath is also 7,2m

9 fly galleries over the auditorium, of which 5 usable for lighting

6. ELECTRICAL SUPPLY

Electrical supply for sound and lighting are separated from each other

STAGE RIGHT

- 3 x 400V – 125A (lighting)
- 3 x 400V – 63A (lighting)
- 3 x 400V – 32A (lighting)
- 4 x 400V – 16A (lighting)

STAGE LEFT

- 1 x 400V – 63A (sound, connection to stage right provided)

There are several additional power plugs on stage: 240V – 16A

TECHNICAL EQUIPMENT – GENERAL

1. CURTAINS / SCREENS

- Travelling curtain night blue, german opening, manual operation (stage left, down stage)
- 14 legs night blue 3m x 9m (w x h)
- 5 borders night blue 15m x 3m (w x h)
- 2 (half) back drops night blue 9,5m x 9m (w x h)
- 1 back drop night blue 15m x 9m (w x h)
- 1 back drop white 15m x 9m (w x h)
- 4 side drops 5m x 7m (w x h – 2 per side, mounted on rail underneath lateral fly galleries)
- 1 black scrim 15m x 9m (w x h)
- 1 projection screen white (frontal) 14m x 7m (fixed installation just behind travelling curtain)
- 1 projection screen white (frontal) white 6m x 4m (w x h – on alu frame – just to hang)

2. MARLEY

Black / white

- 7 lanes of 14m on 1,6m
- 2 lanes of 12,5m on 1,6m
- 1 piece adapted to the shape of the apron

TECHNICAL EQUIPMENT – LIGHTING

1. DIMMERS

- 224 x 2,5kW (ADB Eurodim 2)
- 18 x 5kW (ADB Eurodim 2)
- 14 x switch 2,5kW (ADB Eurodim 2)
- 1 x dimpack 6 x 3kW (ADB Memopack - mobile, 400V 32A)
- 4 x dimmer 1 x 2kW (mobile, 240V 16A) with integrated manual fader

2. LIGHTING DESKS

- ADB Mentor 240 ch
- ADB Mentor extension wing 24 subs
- MA Dot2 XL-F (shared with Komodie, so check availability!)
- MA Dot2 F-wing

3. CONNECTIONS

Multi connectors are Harting Han-16 for all 2,5kW channels or Han-6 for all 5kW channels

All 2,5kW channels have CEE 16A (blue) connectors

All 5kW channels have CEE 32A (blue) connectors

- 2 x DMX booth -> stage right
- Luminex GigaCore 14R in the booth and on stage right connected by 2 fiber cables
Support : sACN – ArtNet – MaNet2 – HogNet – RTTrPL
- Luminex Ethernet-DMX MkII node on stage right
- 4 x CAT6 technical seats in the venue -> booth
- 4 x CAT 6 stage right -> stage left

4. LIGHTING STANDS

- 7 x Chrome Manfrotto wind-up stand : 3,7m
- 1 x Chrome Manfrotto telescopic stand : 3,8m
- 5 x Black Manfrotto telescopic stand : 3,0m
- 13 x floorstand for mounting with hook
- 20 x floorstand for mounting without hook

5. HOUSE LIGHTS

LED fixtures, DMX-controlled

6. LUMINAIRES – AUDITORIUM FLY GALLERIES

- 12 x PC 2kW ADB C-203
- 6 x PC 1,2kW ADB C-103
- 10 x Profile 2kW ADB DN-205 (10°-22°)
- 6 x Profile 1,2kW ADB DSN-105 (11°-23°)
- 2 x Profile 1,2kW ADB DS-105 (15°-31°)

7. LUMINAIRES - BALCONNIES

- 4 x Profile 2kW ADB DN-205 (10°-22°)
- 4 x PC 1,2kW ADB C-103

8. LUMINAIRES – LIGHTING BRIDGE

- 16 x PC 1,2kW ADB C-103
- 5 x Profile 1,2kW ADB DS-105 (15°-31°)

9. LUMINAIRES – MOVABLE TEASERS

- 8 x PC 1,2kW ADB C-103 (4 per side)

10. LUMINAIRES - STAGE

- PC (pebble)
 - 4 x PC 500W ADB C-51
 - 24 x PC 1,2kW ADB C-103
- Fresnel
 - 12 x Fresnel 1,2kW ADB F-101
 - 6 x Fresnel 2kW ADB F-201
 - 2 x Fresnel 5kW ADB SH-50
- Profilel
 - 8 x Profile 1,2kW ADB DS-105 (15°-31°)
 - 8 x Profile 1,2kW ADB DW-105 (15°-38°)
 - 8 x Profile 1,2kW ADB DVW-105 (38° - 57°)
- PAR-64
 - 40 x PAR64 CP60 / CP61 / CP62
 - 8 x PAR64 Short-nose CP60 / CP61 / CP62
 - 4 x six-bar CP60 / CP61 / CP62
 - 2 x ACL
- Quartz
 - 8 x wash ADB LF-1000
 - 5 x triple wash ADB ACP-1003H
 - 11 x single wash ADB ACP-1001
- Diverse
 - 8 x Striplight Showtec T-20
 - 6 x 2-light Molefay Showtec par36-2L (passive)
 - 2 x Stroboscope 3kW Luxibel LX-301
- LED
 - 30 x LED-Par 64W Showtec Power Spot 9 Q6 Tour (RGBWUVA)

11. HAZER

- 1 x Hazer REEL-FX DF-50
- 1 x fan (40cm) Controlled by dimmer

TECHNICAL EQUIPMENT – SOUND

1. MIXING DESKS

- 1 x Midas Venice 320
- 1 x Midas Venice 160
- 1 x Midas M32
- 1 x Midas M32R
- 1 x Yamaha LS-9/16

2. FOH-SYSTEM

GROUND FLOOR

- 2 x Meyer Sound MSL-2 per side
- 1 x Renkus-Heinz DRS 18-2B sub per side
- 4 x Meyer Sound UPA-1C centre cluster flown
- 4 x Renkus-Heinz TRX-61 frontfill
- 10 x Renkus-Heinz SGX-41 infill underneath the balconies

BALCONY

- 4 x Renkus-Heinz SGX-41 infill for side balconies 1 and 2 (1 per side per balcony)
- 2 x Renkus-Heinz PNX-121/6A infill for side balconies 3, 4 and 5 (1 per side)
- 4 x Renkus-Heinz PNX-121/6A infill for central balcony (2 per side in cluster)
- 8 x Renkus-Heinz TRX-81 for central balcony

3. OUTBOARD

- 1 x Yamaha SPX-2000
- 1 x Lexicon LXP-15
- 4 x DBX 166A compressor/limiter/gate
- 3 x Klark Teknik DN-360 stereo EQ
- 1 x DBX 2233 stereo EQ
- 1 x Sony MDS E52 MD player/recorder
- 1 x Tascam DCRW-750 CD player/recorder
- 2 x Tascam CD-01U CD player
- 2 x Furman PL-8C E

4. CONNECTIONS

- Analogue multi 34/10 + Stageblock stage left and right
- Cat5e digital multi + 2 x Midas DL-16
- Luminex GigaCore 14R in the booth and on stage right connected by 2 fiber cables
Support : Dante – Ravenna/AES67 – EtherSound – Q-Lan - REAC
- 4 x CAT6 technical seats in the venue -> booth
- 4 x CAT 6 stage right -> stage left

5. WEDGES

- 8 x d&B Max-15
- 2 x Renkus-Heinz TRX-61

6. MICROPHONES

- 1 x Shure Bèta 52
- 3 x Shure Bèta 56
- 6 x Shure SM 57
- 6 x Shure SM 58
- 4 x Shure SM 81
- 3 x Shure Bèta 87
- 2 x Shure SM 98
- 1 x Shure Bèta 57

- 4 x AKG C-480 (CK63 head)
- 2 x AKG C-414 XLII
- 2 x AKG C-411 III
- 2 x AKG C-516 ML

- 2 x Sennheiser MD 421
- 2 x Sennheiser E 606
- 1 x Sennheiser E 604

- 1 x Neumann KMS 105 bk
- 2 x Neumann KM 184 mt

- 4 x DPA 4099 (+ extended range of instrument adapters)

- 3 x Crown PCC 170
- 4 x Audio Technica U 851 R

- 5 x Klark Teknik LBB 100
- 2 x Klark Teknik DN 100
- 2 x BSS AR 133
- 2 x Radial JDI Duplex
- 2 x Radial Pro-AV2
- 1 x Radial USB-Pro
- 1 x Helpinstill Piano pick-up

7. WIRELESS MICROPHONES

- 4 x Shure ULX-D4D digital dual receiver
- 8 x Shure ULX-D1 digital bodypack transmitter
- 4 x Shure ULX-D2 Bèta 58 digital handheld microphone
- 8 x DPA 4066 headset microphone
- 2 x Audio Technica BP-896 miniature microphone

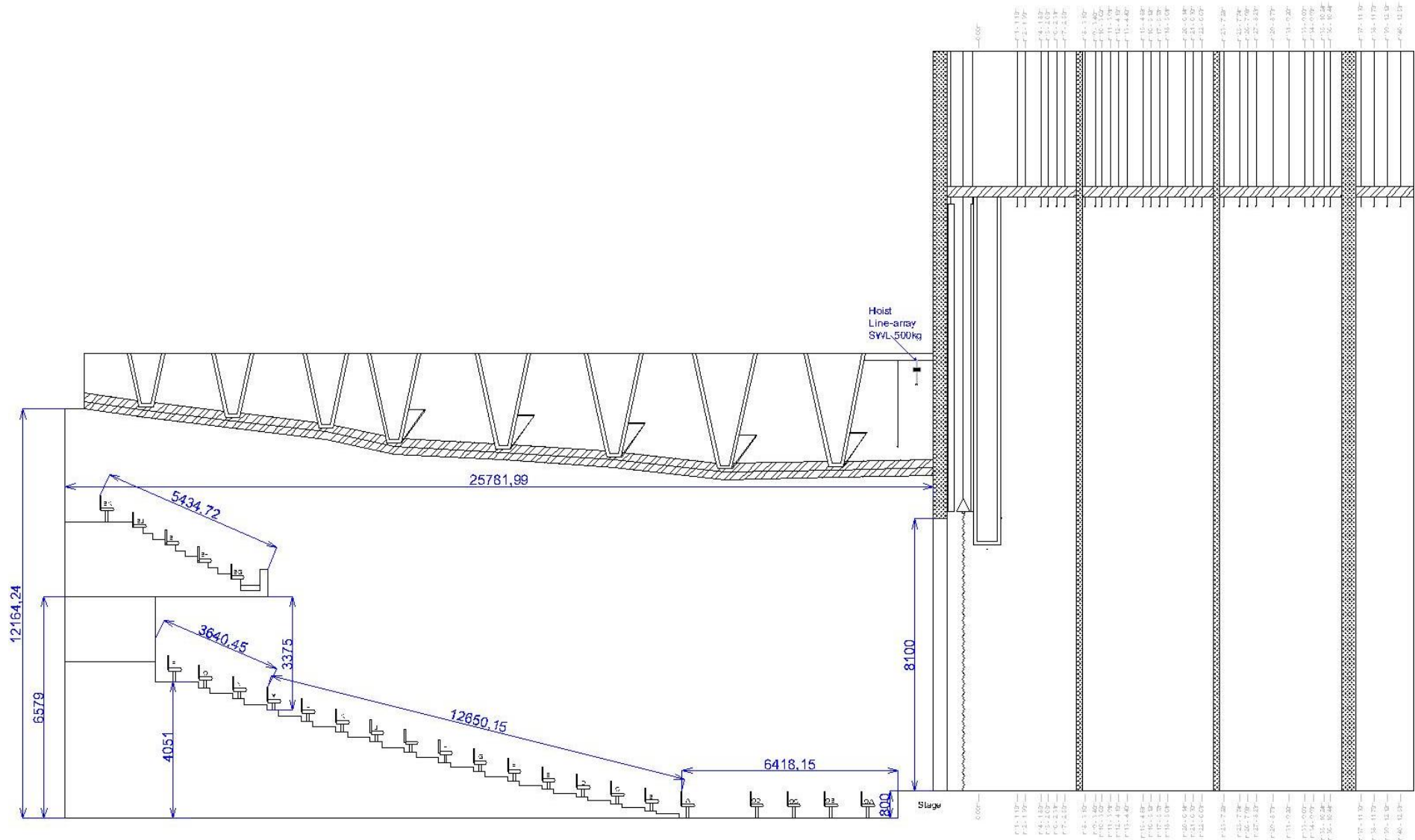
TECHNICAL EQUIPMENT – VIDEO

1 x Panasonic PT-DW640ELK (6000 ansi-lumen)

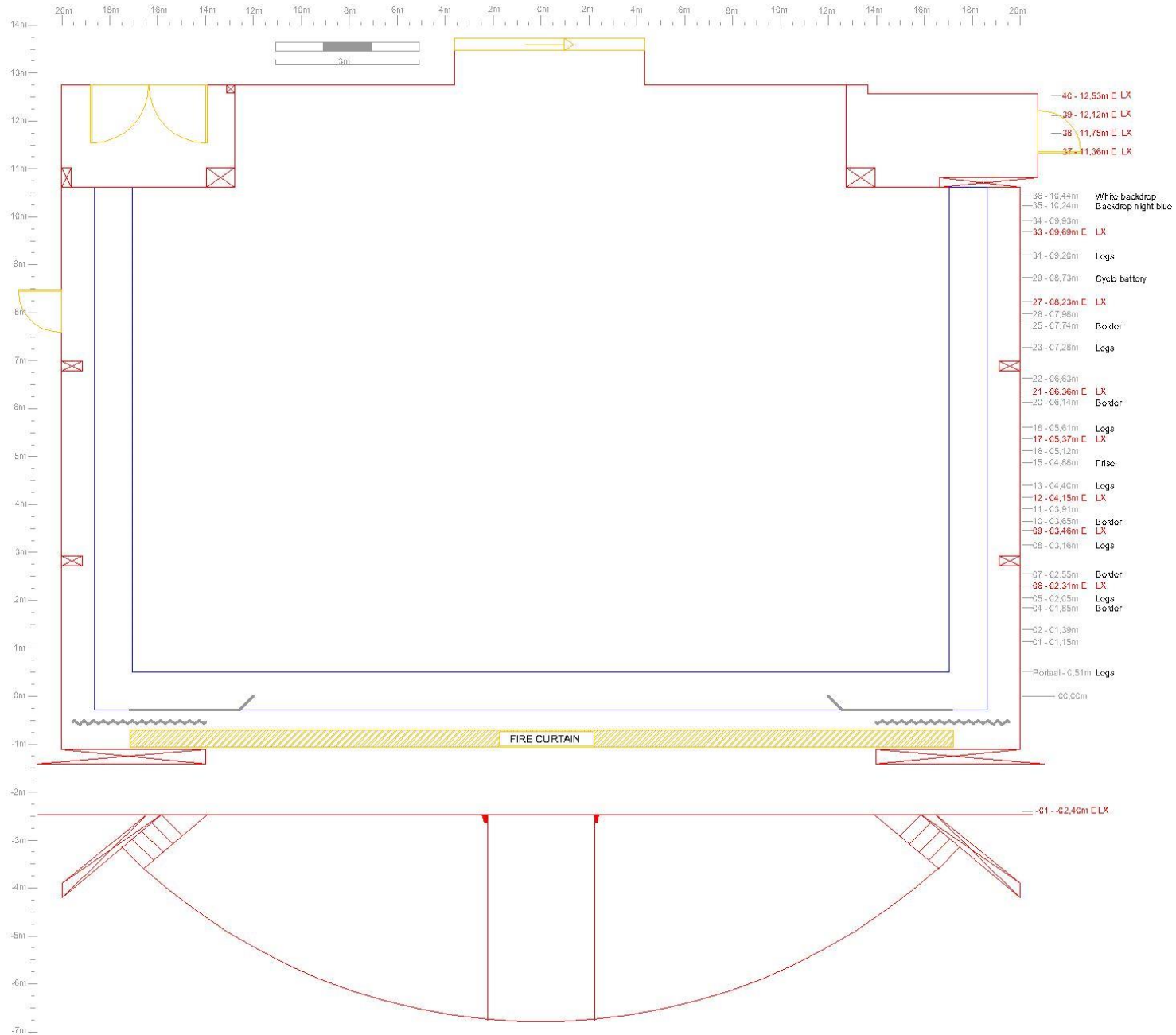
1 x Barco DP2K C15 (15000 ansi-lumen) (fixed installation!!)

PLANS

1. SECTION



2. STAGE



3. LIGHTING

